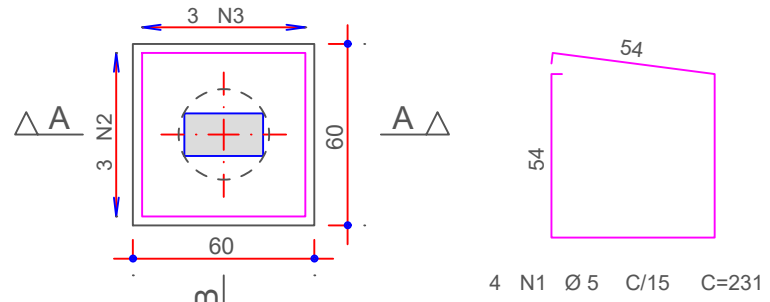


ACO	POS	BIT (mm)	QUANT	COMPRIMENTO UNIT (cm)	TOTAL (cm)
BT3 (X6)					
60A	1	5	24	231	5544
50A	2	8	18	208	3744
50A	3	8	18	210	3780
Estaca Tipo 2 - Ø30 (X6)					
60A	1	5	120	107	12840
50A	2	10	30	338	10140
V11					
50A	1	8	2	768	1536
50A	2	10	2	755	1510
50A	3	6.3	2	80	160
60A	4	5	39	91	3549
V12					
50A	1	8	2	259	518
50A	2	8	2	250	500
60A	3	5	11	91	1001
V13					
50A	1	8	2	420	840
50A	2	10	2	405	810
60A	3	5	19	91	1729
V14					
50A	1	8	2	375	750
50A	2	10	2	360	720
60A	3	5	17	91	1547
V15					
50A	1	8	2	470	940
50A	2	10	2	450	900
60A	3	5	22	91	2002
V16					
50A	1	8	3	765	2295
50A	2	10	2	765	1530
60A	3	5	40	91	3640
V17					
50A	1	10	2	363	726
50A	2	10	2	360	720
60A	3	5	16	101	1616
V18					
50A	1	8	2	341	682
50A	2	8	2	330	660
60A	3	5	15	91	1365
V19					
50A	1	8	2	435	870
50A	2	8	2	415	830
60A	3	5	18	91	1638
V20A=V20B=V20C (X3)					
50A	1	8	6	315	1890
50A	2	8	6	310	1860
60A	3	5	42	91	3822
V21					
50A	1	8	2	455	910
50A	2	8	2	445	890
60A	3	5	20	91	1820
V22					
50A	1	8	2	379	758
50A	2	8	2	365	730
60A	3	5	17	91	1547
V23					
50A	1	8	2	370	740
50A	2	8	2	360	720
60A	3	5	17	89	1513
V24					
50A	1	8	2	352	704
50A	2	8	2	345	690
60A	3	5	16	91	1456
RESUMO AÇO CA 50-60					
ACO	BIT (mm)	COMPR (m)	PESO (kg)		
60A	5	466	72		
50A	6.3	2	0		
50A	8	286	113		
50A	10	163	101		
Peso Total	60A =		72 kg		
Peso Total	50A =		214 kg		

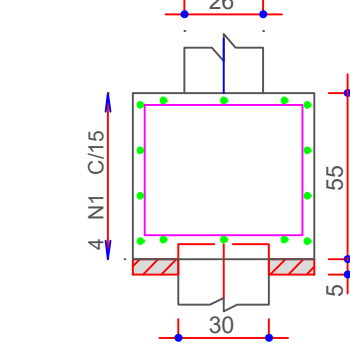
Volume de concreto (C-30) = 12,02 m³
Área de forma = 131,15 m²

BT3 6X (ESCALA 1:25)

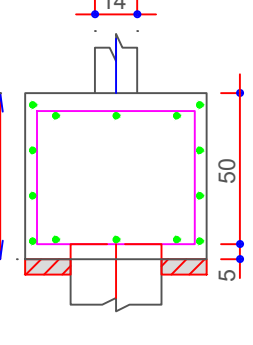
PLANTA



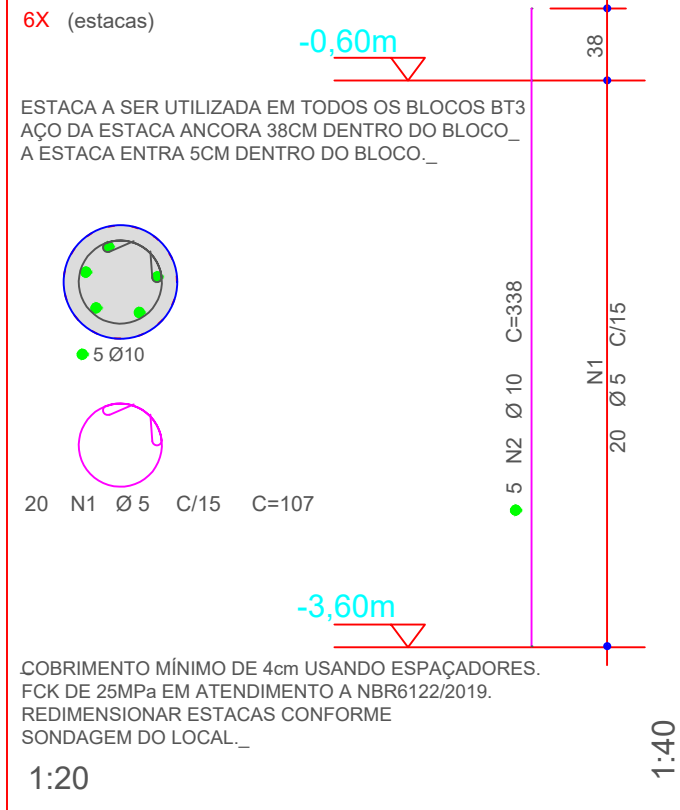
CORTE A - A



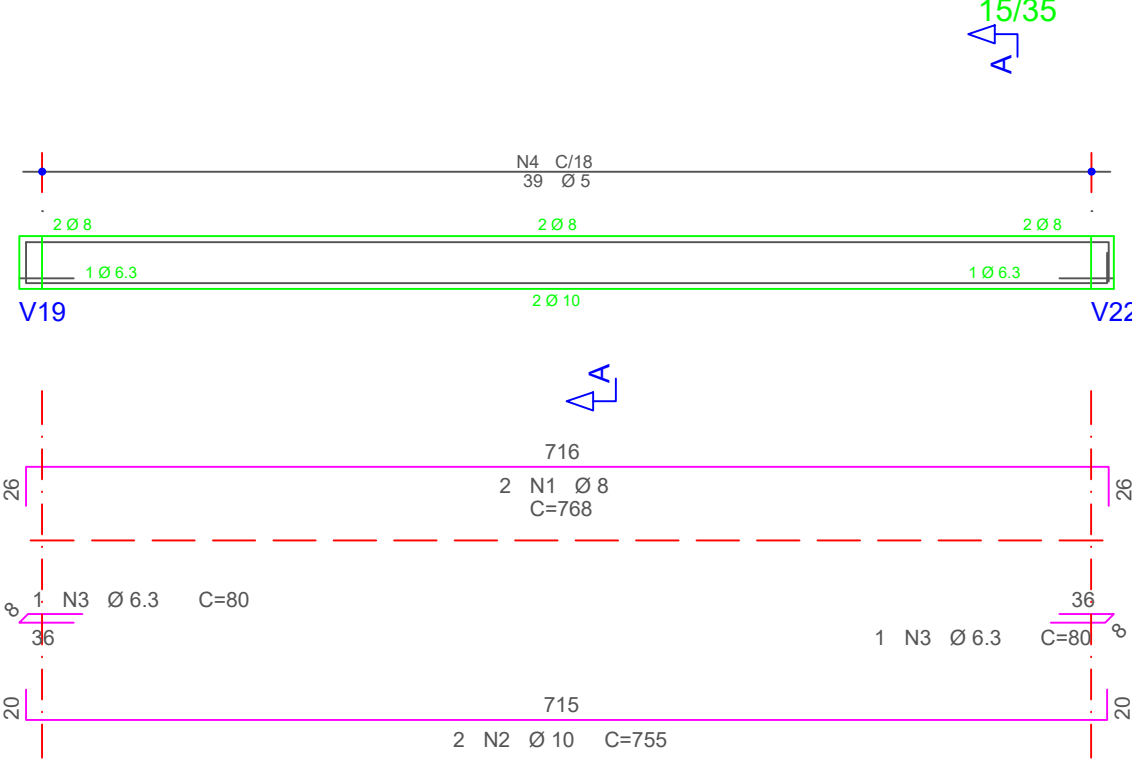
CORTE B - B



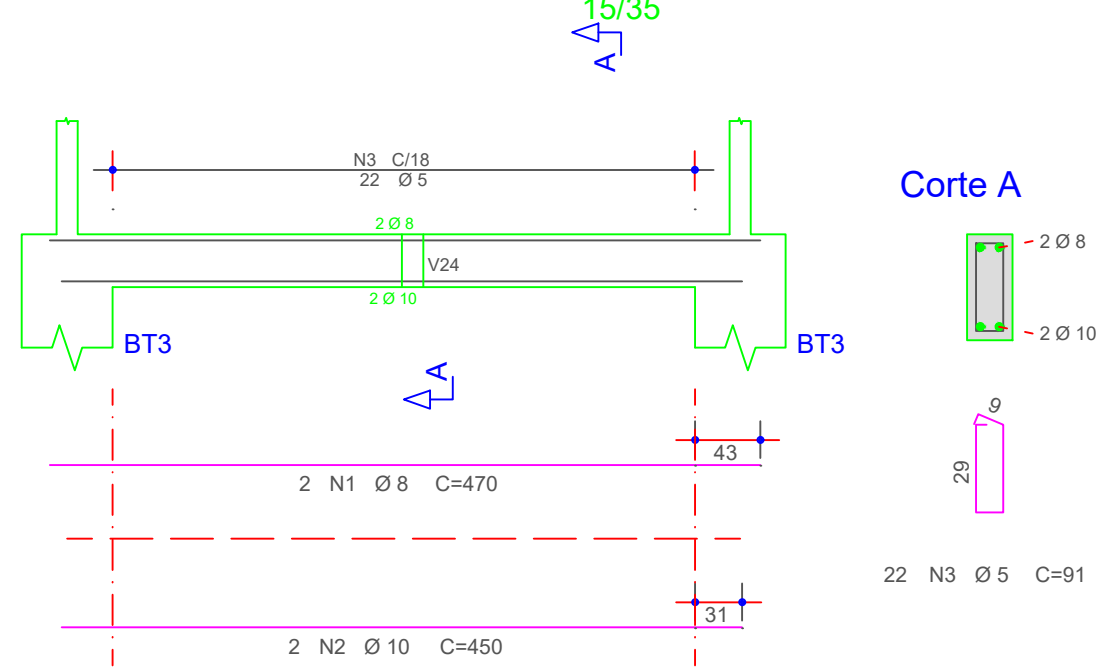
Estaca Tipo 2 - Ø30 6X (estacas)



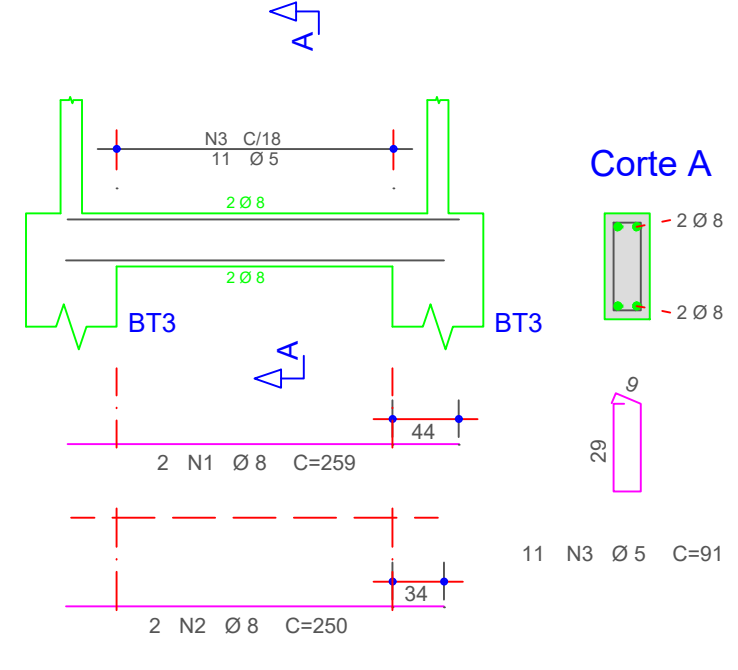
V11



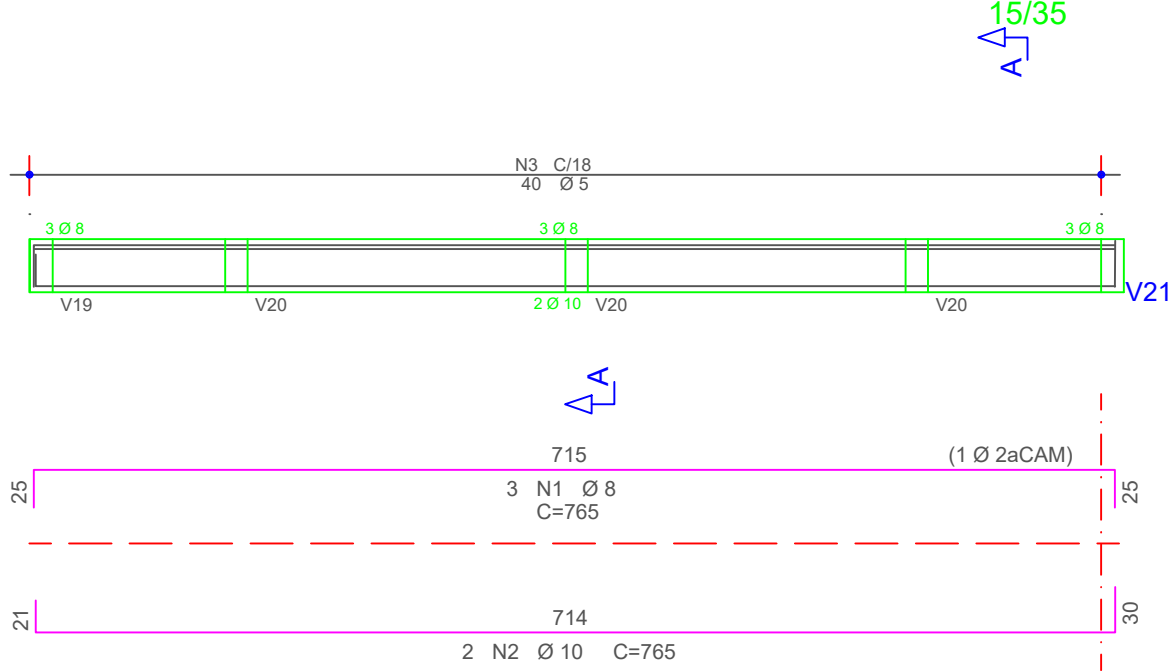
V15



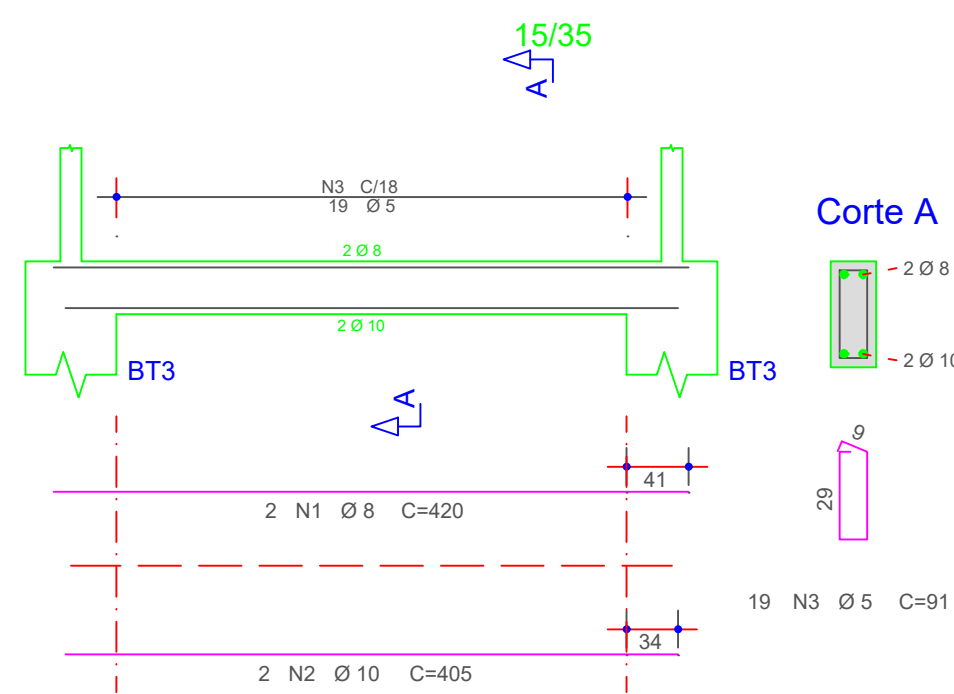
V12



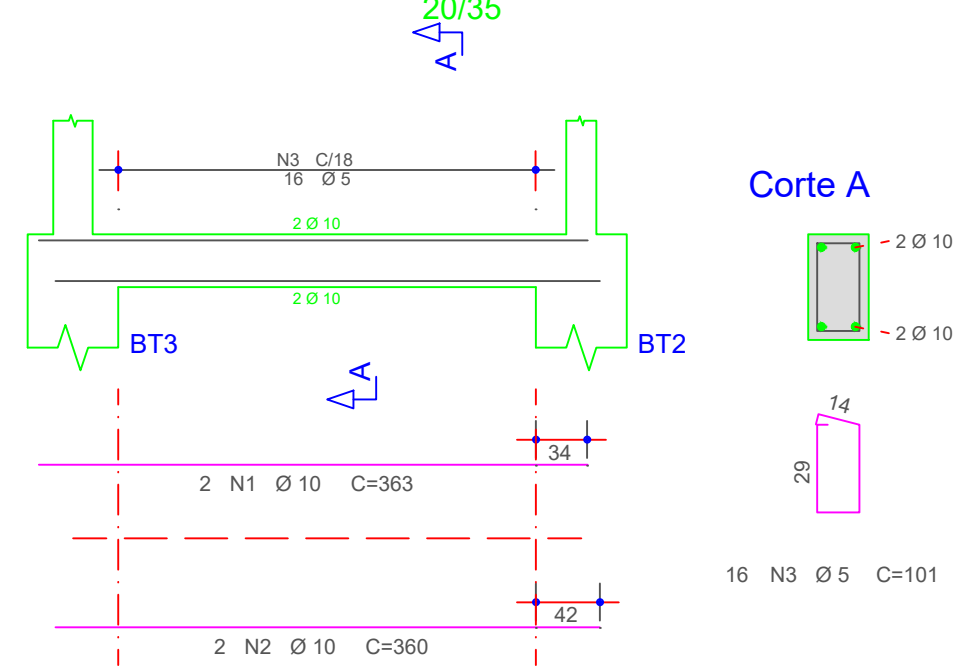
V16



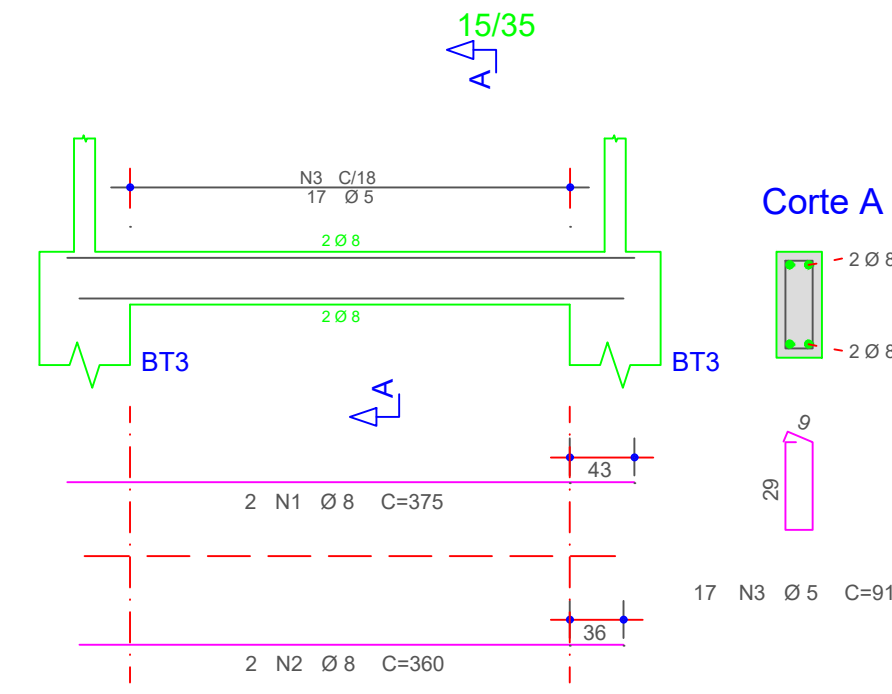
V13



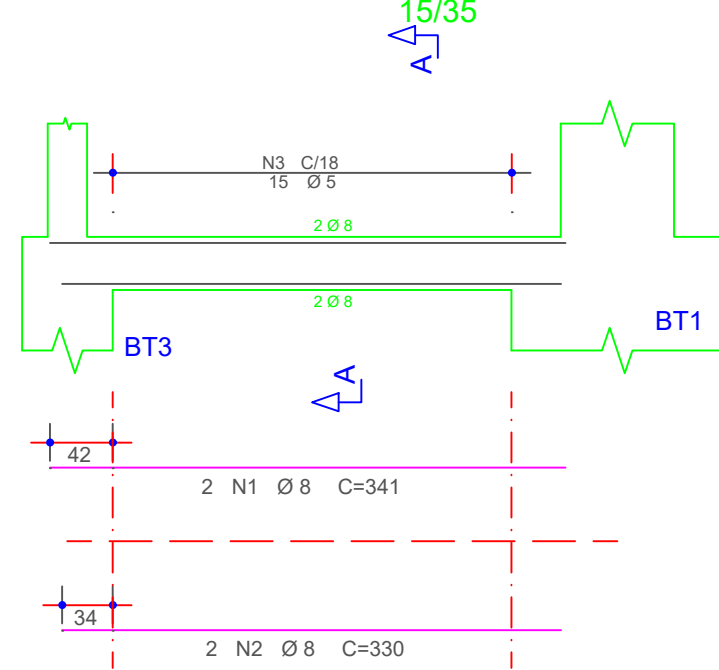
V17



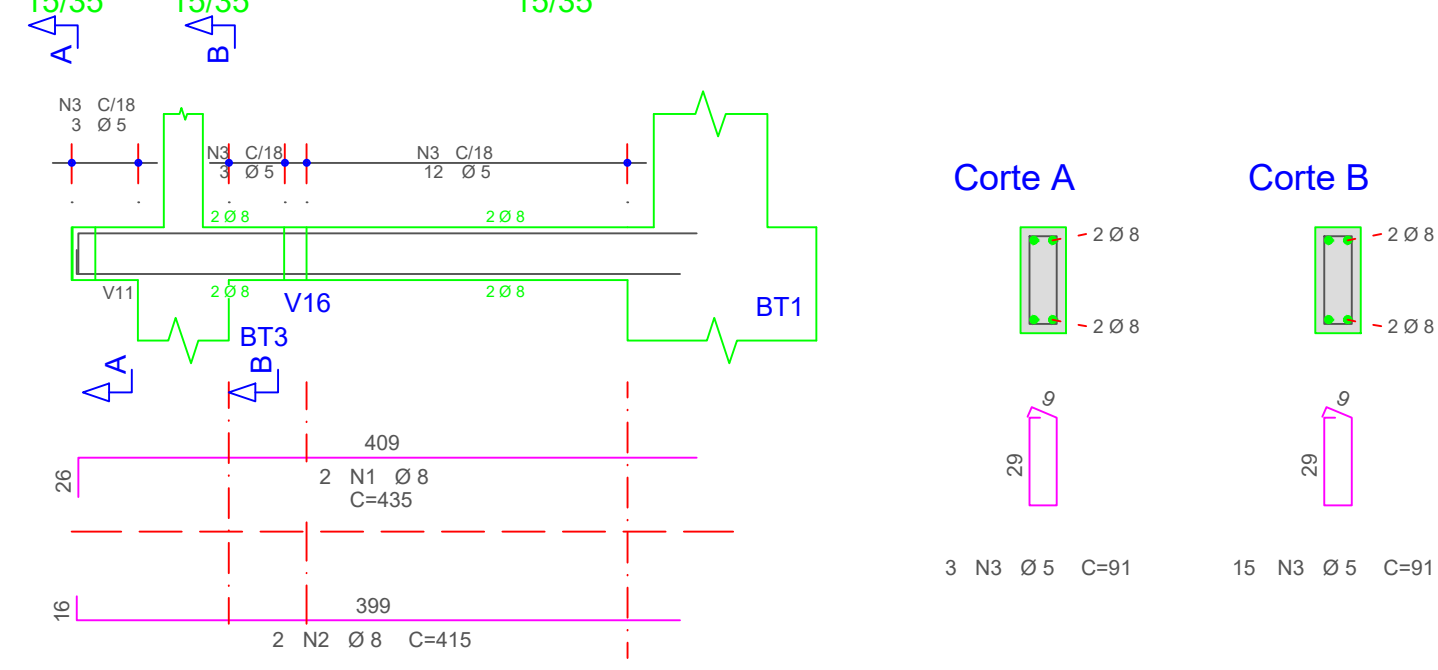
V14



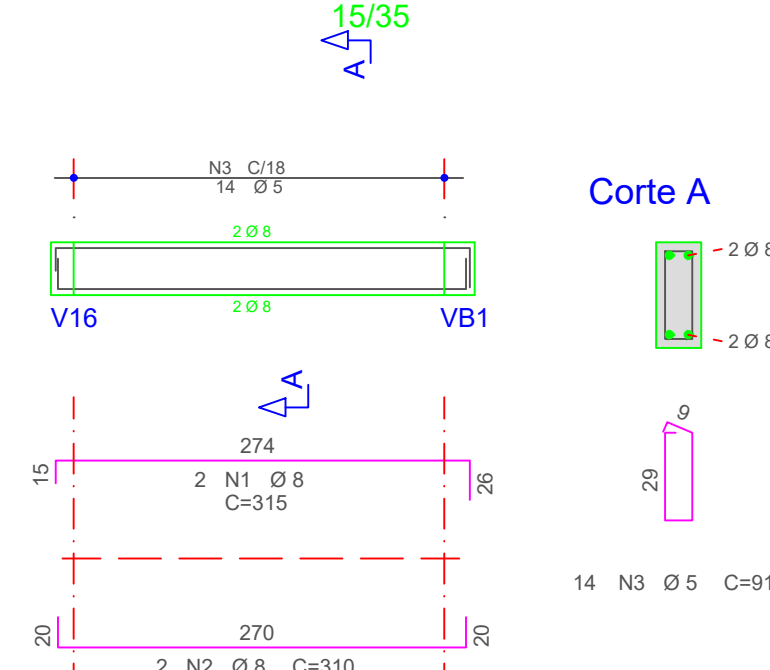
V18



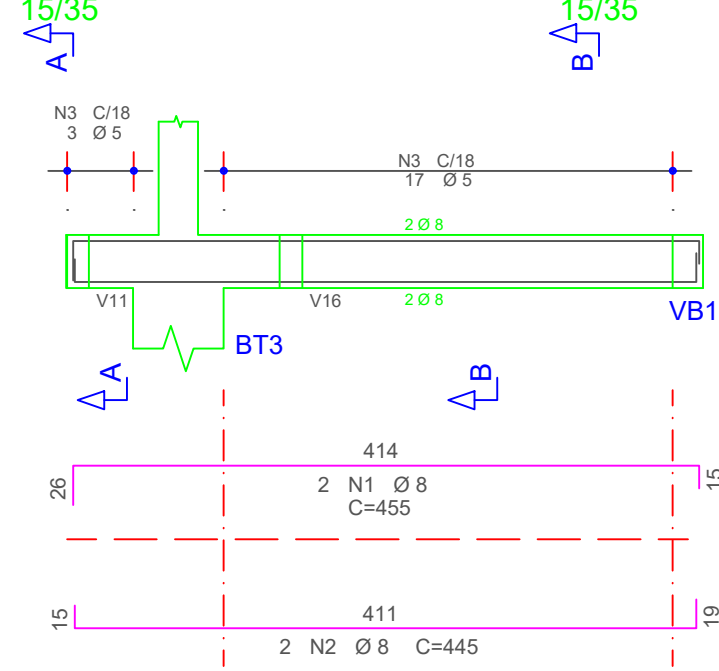
V19



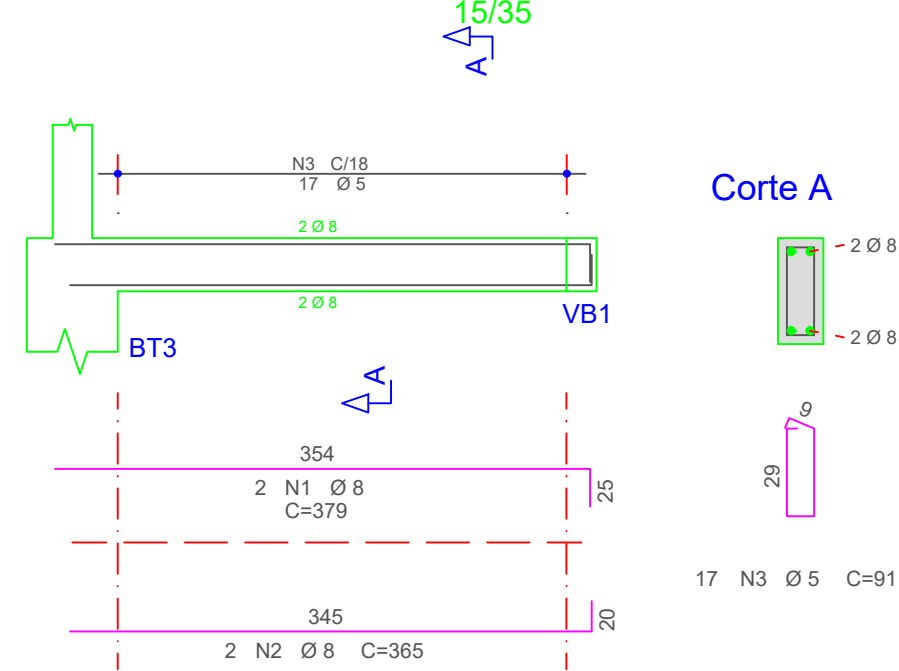
V20A=V20B=V20C



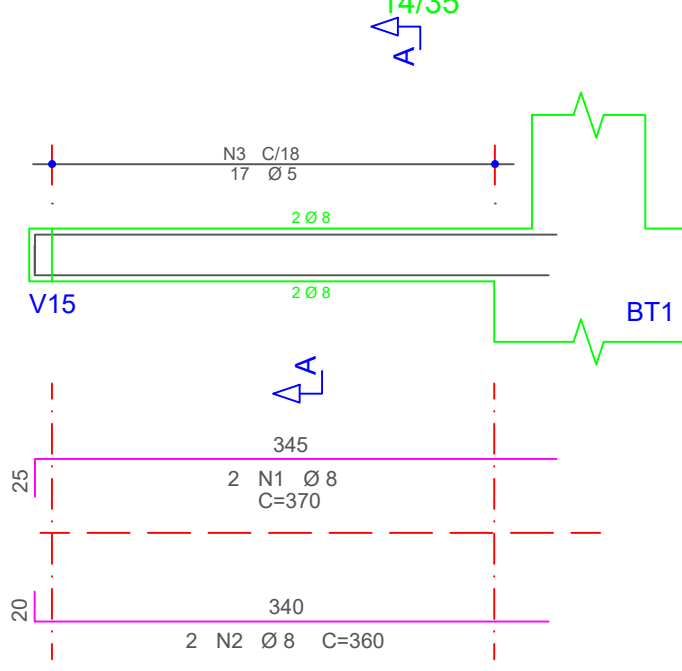
V21



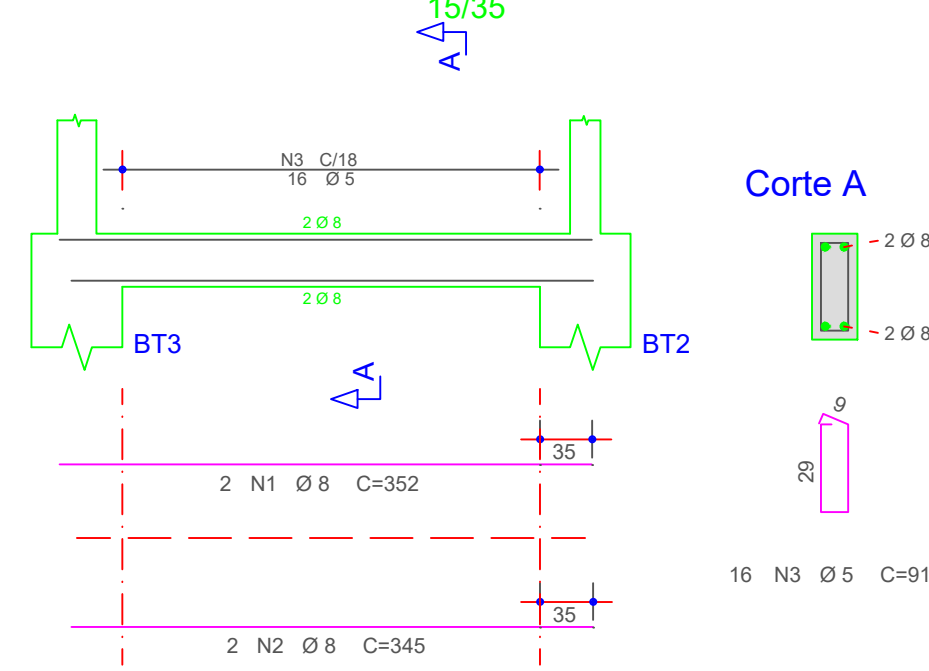
V22



V23



V24



Visto da Prefeitura Municipal

09

16

Projeto de Estrutura

OBRA: QUADRA COBERTA COM VESTIÁRIO

PROPRIETÁRIO: PREFEITURA MUN. DE GEN. CARNEIRO - PR



Avenida Pres. Getúlio Vargas, 601 - Centro
CEP 84660-000 General Carneiro - Paraná
Fone/Fax (0**42) 3552 - 1441
CNPJ: 75.687.681/0001-07
E-mail: pref.eng@hotmail.com

ENDEREÇO: BAIRRO SÃO JOÃO

LOCAL: GENERAL CARNEIRO - PR

DATA: 23.01.2024

ESCALA: INDICADAS

DESENHO: PABLO CASANOVA
Fone: (0**42) 8813 - 7325

RESP. TÉCNICO: MARCELA DOS SANTOS GUIMARÃES
Eng. Civil - CREA PR 167294/D

ÁREA: 918,22 m²

TÍTULO: ARMAÇÃO DAS VIGAS DA FUNDAÇÃO ARMAÇÃO DO BLOCO BT3

PREFEITURA MUNICIPAL DE GENERAL CARNEIRO - ESTADO DO PARANÁ